



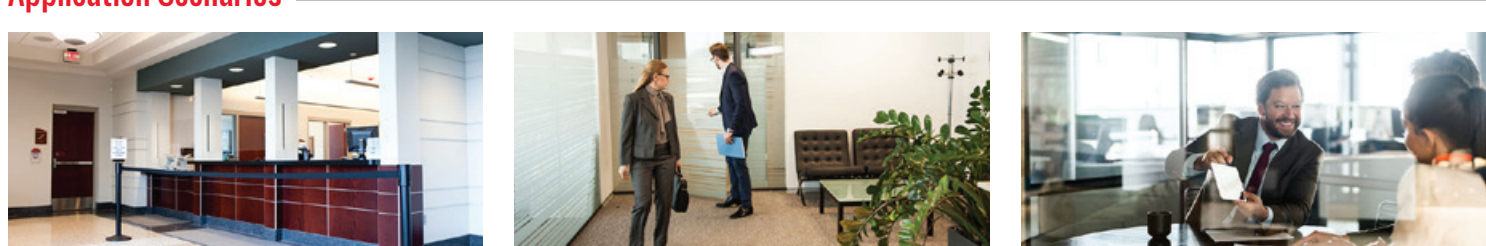
# Banking & Finance: Operate with Instant Temperature Screening Solutions Reduce Risk and Protect People

## Temperature Screening: One of the CDC's Recommendations for Reopening Business

Banks and financial institutions have new challenges as they get back to business. A top priority is to protect their employees, visitors and customers while delivering a great customer experience. Easy-to-operate Hikvision temperature detection solutions can help organizations protect people and assets, while reducing risk. Thermal solutions can help you easily and quickly pre-screen employees, visitors, customers and vendors before they enter your business. Pre-screening takes less than one second, is highly accurate, and it offers contactless measurement from a distance.

- Mitigate Risk of Exposure
- Extremely Safe—Contactless Measurement from a Distance
- Instant One-Second Screening
- Smart—Only Screens Forehead Skin Surface
- Accurate up to ±0.5 Degrees Fahrenheit with Blackbody Calibrator
- Flexible—Simple, No-Wire Solutions for a Wide Range of Applications

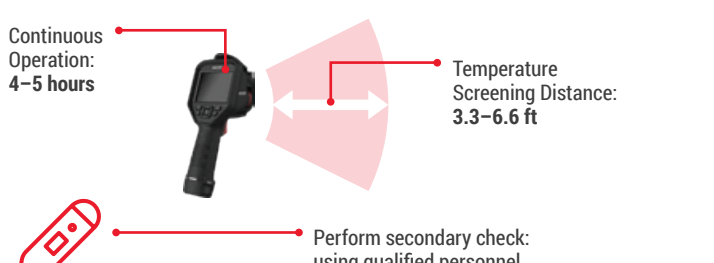
### Application Scenarios



### Visitor Entrance Temperature Screening and Security Footage

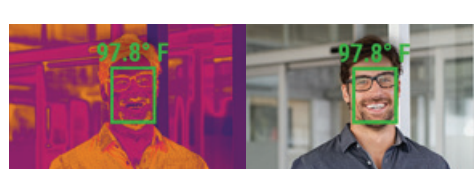
#### Basic and No-Wire Solution with Bi-Spectrum Handheld Camera

- Hikvision's bi-spectrum camera models combine thermal and optical imaging to provide excellent visual quality and identification capabilities for high-traffic areas such as entrances and exits.
- Ease of installation with Hikvision's tripod mounting, simple wiring system, and rapid deployment solution.



#### Thermographic Handheld Camera

- DS-2TP21B-6AVF/W
- Thermal Resolution: 160 x 120
- Optical Resolution: 640 x 480
- Wi-Fi Supported
- Accuracy of ±0.9° F
- Effective Range of 3.3 to 6.6 ft.
- 3.5-Inch LCD Touch Screen
- Quick Non-Contact Rapid Deployment with Tripod



### Basic, Simple Wiring Solution

#### Thermographic Bullet Camera

- DS-2TD2617B-6/PA
- Optical: 2688 x 1520
- Thermal: 160 x 120, 6 mm lens
- Accuracy of ±0.9° F (±0.5° F with Blackbody Calibrator)
- Effective Range of 4.9 to 9.8 ft.
- Skin-Surface Temperature
- Face Mask Detection



#### Thermographic Turret Camera

- DS-2TD1217B-3/PA
- Optical: 2688 x 1520
- Thermal: 160 x 120, 3 mm lens
- Accuracy of ±0.9° F (±0.5° F with Blackbody Calibrator)
- Effective Range of 2.6 to 4.9 ft.
- Skin-Surface Temperature
- Face Mask Detection



#### I Series NVR

- Up to 8/16 channel Plug and Play
- 80/160 Mbps incoming Bandwidth
- HDMI Video Output Up to 4K



#### Tripod and Adaptor for Bullet Solution

- DS-2907ZJ (Tripod)
- DS-2909ZJ (Adaptor)



#### Blackbody Calibrator

- DS-2TE127-G4A
- Temperature Resolution: 0.18° F (0.1° C)
- Accuracy of ±0.18° F (0.1° C)
- Temperature Stability: 0.18°F/h (0.1°C/h)
- Effective Emissivity: 0.97 ± 0.02

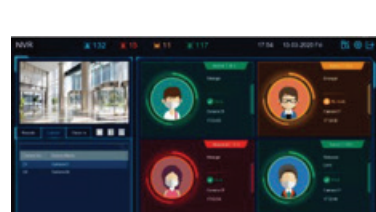


### SIMPLE WIRING, PREMIUM ADD ON

Local storage and HikCentral software adds: Hikvision's DeepinMind NVR with our central management system (CMS), HikCentral, and thermal solutions provide a wide range of benefits for education.

#### Simple Wiring, Extensive Features:

- Local Storage with NVR
- Mask Detection
- Dedicated NVR GUI to Display Temperature Status
- NVR Registers Elevated Skin-Surface Temperature When Detected
- Multi-Layer Remote Supervision
- Temperature Measurement Alarm Reports
- Intuitive Data Search can be Displayed and Exported



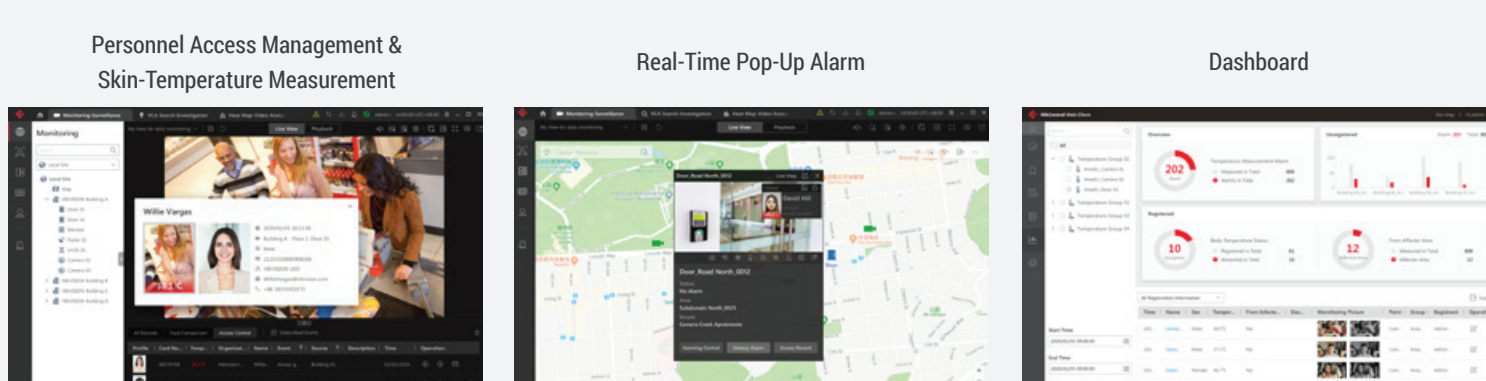
#### DeepinMind NVR iDS-9632NXI-H8/X(B)

- 8-Channel Face Picture Comparison Support
- 32-Library Capacity Up To 100,000 Face Images, Face Mask Detection Support
- Identity Verification & Stranger Alarm



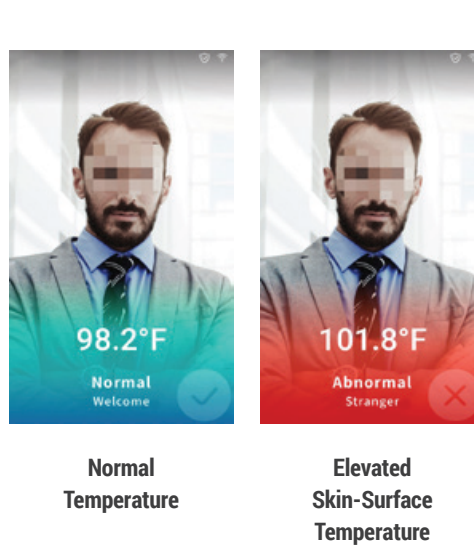
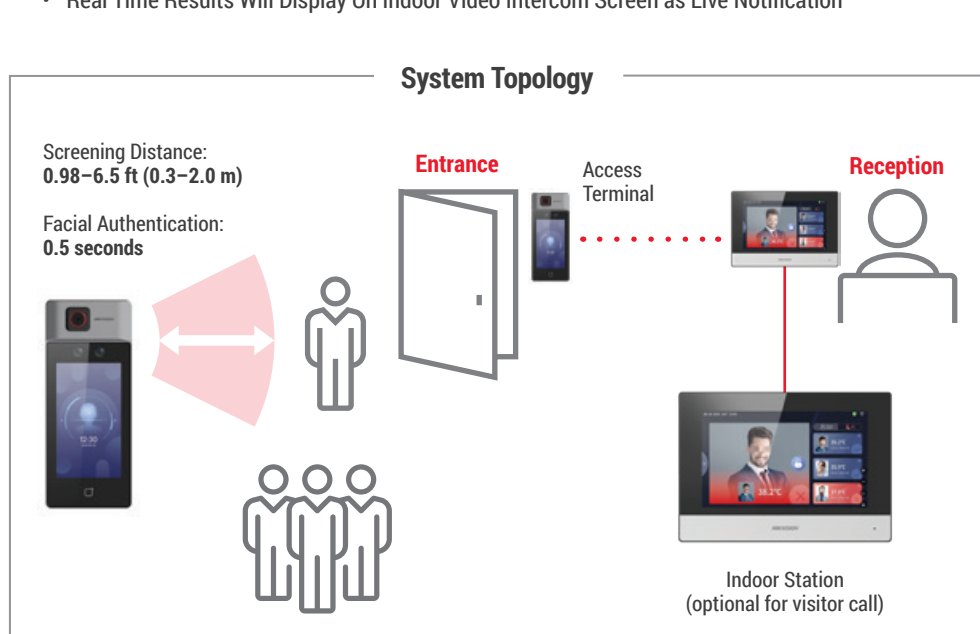
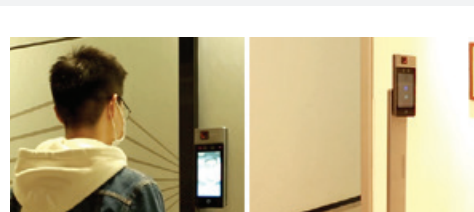
### HikCentral Professional CMS

- Local monitoring, instant alarm pop-ups, and temperature measurement reports
- Identity information registered when elevated skin-surface temperature is detected
- Data can be intuitively searched, displayed and easily exported



### Employee/Authorized Personal Room: Temperature Screening with Facial Recognition Access Control

- Onsite Temperature Screening and Access Control Terminal
- Touch-Free Authentication
- Instant Alarm for Abnormal Temperature and Unauthorized Personnel
- Touch-Free Authentication and Supports Mask Detection
- Real Time Results Will Display On Indoor Video Intercom Screen as Live Notification



### Product Showcase

#### Temperature Screening Terminal

- DS-K1T671TM-3XF
- Temperature Screening, Mask Detection, Face Recognition
- Abnormal Temperature and Voice Reminder On Alarm
- Accuracy: ± 0.9° F, Range: 86 to 113° F



#### Indoor Station

- DS-KC001
- 7-Inch Touch Screen
- Wi-Fi 802.11b/g/n



#### Floor Stand (optional)

- DS-KAB671-B



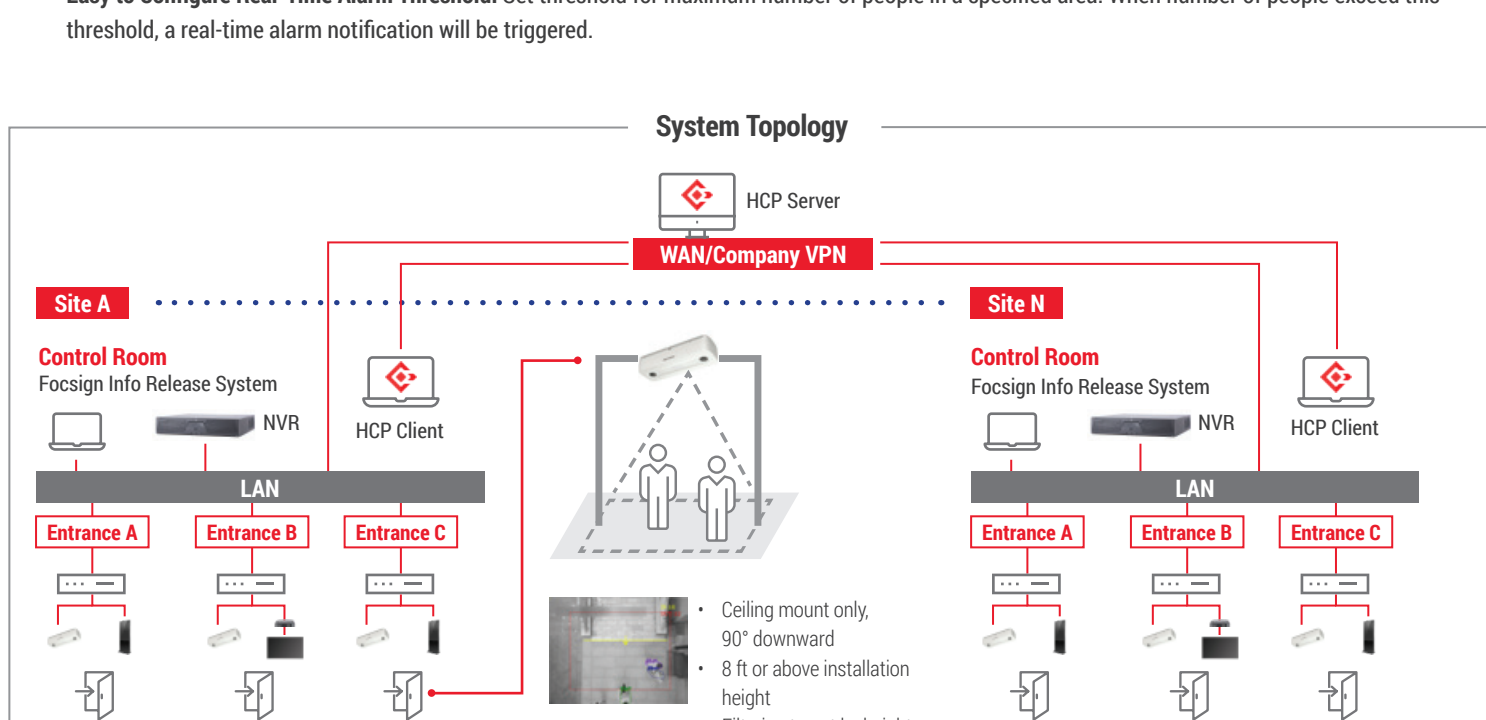
#### HikCentral Professional CMS

- Unified Temperature, Alarm and Video Management
- Temperature Measurement Alarm Reports
- Quick Record Searching and Exporting



### Lobby & Service Area: People Counting Solution for Area People Density Control

- Automate Social Distancing with Hikvision's People Counting Solution
- Easy to Configure Real-Time Alarm Threshold: Set threshold for maximum number of people in a specified area. When number of people exceed this threshold, a real-time alarm will be triggered.



### Product Showcase

#### Indoor/Outdoor Dual-Lens People Counting Camera

- DS-2CD6825G0/C-I(V)S
- 1920 x 1200 @ 30 fps,
- 2 mm Fixed Lens
- IP66, IK08
- Ceiling Mount: Bi-Directional People Counting and Density Control



#### I-Series NVR

- Up to 8/16 channel Plug and Play
- 80/160 Mbps Incoming Bandwidth
- HDMI Video Output Up to 4K



#### 21-Inch Monitor

- DS-D5022FC
- 1080p Resolution LCD Monitor
- LED Direct-Lit Backlight with Uniform Brightness, No Boundary Shadow
- HDMI/VGA/BNC/Audio Built-In Speaker
- VESA, Base Bracket Included, 24/7 Use



#### Temperature Screening Terminal

- POE Switch
- L2 Unmanaged, 10/100M
- RJ45 PoE
- 1x 10/100M RJ45 Uplink Port
- 802.3af/at, PoE Power Budget
- 300m Long Distance Transmission
- 6KV Surge Protection



#### HikCentral Professional CMS

- Unified Temperature, Alarm and Video Management
- Temperature Measurement Alarm Reports
- Quick Record Searching and Exporting



FOCUSED ON YOUR SUCCESS



\*Disclaimer: Hikvision Highly Accurate Thermographic Cameras and Terminals (HAT Cameras and Terminals) are not FDA-cleared or approved thermal imaging devices intended to measure human skin-surface temperature. The HAT Cameras and Terminals are not intended for use in diagnosis of disease or other conditions, or in the cure, mitigation, treatment, or prevention of disease, and shall not be solely or primarily used as an effective diagnostic device for COVID-19. Elevated body temperature should be confirmed with secondary evaluation methods (e.g., an NCIIT or clinical grade thermometer). Users, through their experience with the Hikvision HAT Cameras and Terminals in the particular environment of use, should determine the significance of any fever or elevated temperature based on the skin telethermographic temperature measurement. Visible thermal patterns are only intended for locating the points from which to extract the thermal measurement. To ensure the accuracy of the human skin-surface temperature measurement, the technology shall be used to measure only one subject's temperature at a time and shall not be used to measure multiple individuals' temperatures simultaneously.