

VIDEO, SECURITY & BEYOND

# HIKVISION'S VERSATILE POE NETWORK SWITCHES

Hikvision's Professional PoE Switches bring a comprehensive end-to-end video solution that delivers intelligent security and easy management.

## VISUAL

Dashboard provides visual system health status and sends real-time alerts, enables live camera views, and configuration to save integrators and users time by simplifying daily troubleshooting, maintenance, and management. (Available on both 100 Mbps & GB Smart Managed Switches)

## POWERFUL

Up to 90W per PoE Port Gigabit Switch delivers a substantial power source for high-power consumption cameras like Network Speed Domes, Multi-Lens Cameras, and TandemVu PTZs. Up to 984 feet long distance for transmission simplifies installation and reduces costs.

## CONVENIENT

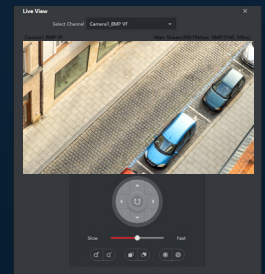
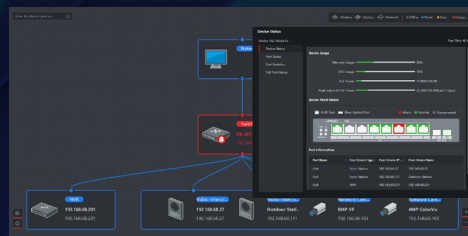
Easy switch deployment saves time and money with simplified installation.

## SECURE

Auto-restart cameras once they are detected offline to secure video recording and ensure all critical events are captured.

## PERFORMANCE

Key features like VLANs for segmenting, QoS for traffic prioritization, port bandwidth controls, and SNMP monitoring uplevel your network management. (Available on Gigabyte Smart Managed Series Switches)



\*\*Topology and direct camera pre-view with PTZ control only available in Smart Managed Switches Series



\*\* Hi-PoE power supply only available in Hi-PoE Unmanaged Switch Series

DS-3E1105P-EI DS-3E1318P-EI  
DS-3E1309P-EI DS-3E1326P-EI

DS-3E1510P-SI DS-3E1526P-SI  
DS-3E1518P-SI DS-3E1552P-SI \*

DS-3E0505HP-E DS-3E0520HP-E  
DS-3E0510HP-E DS-3E0528HP-E



For more information, please scan the QR Code.

\* 52 Port Smart Managed Switch can meet demand for scaling IP Cameras

**HIKVISION**